

Inspiré par les modèles de Volker Preikschat, atlas83 vous propose ce bâtiment pour terminer 2014



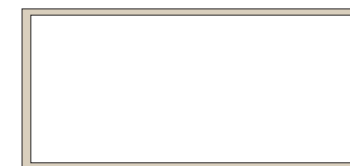
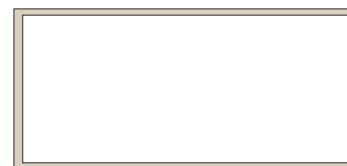
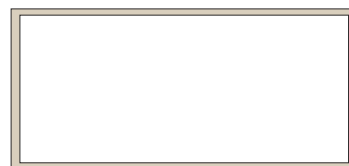
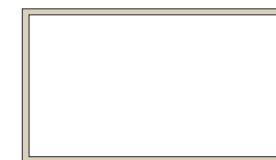
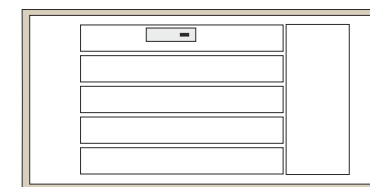
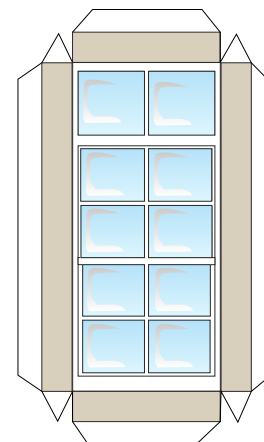
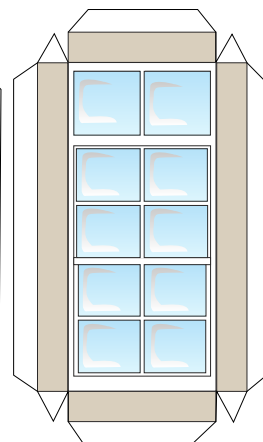
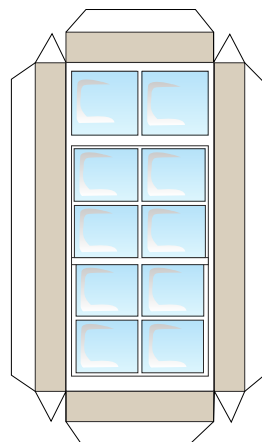
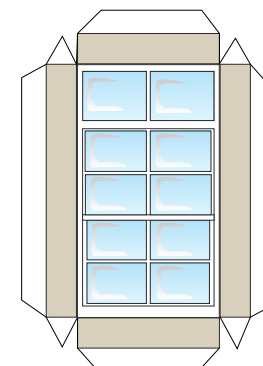
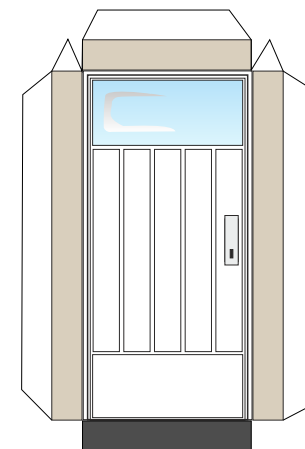
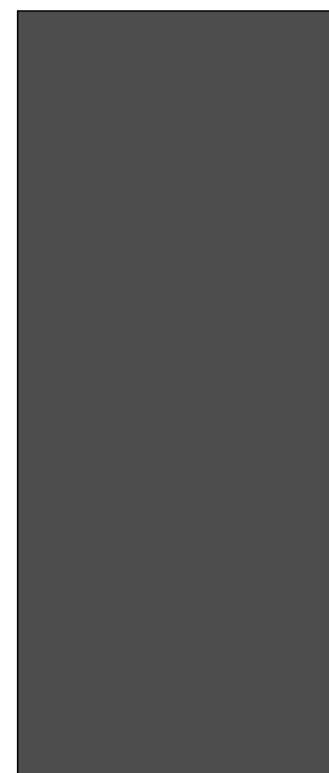
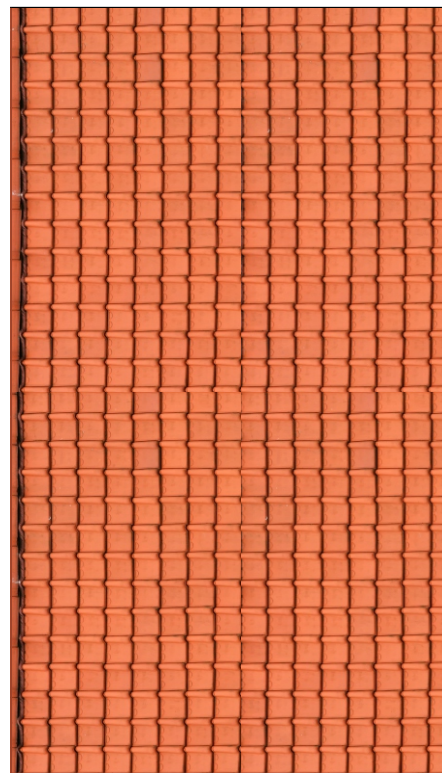
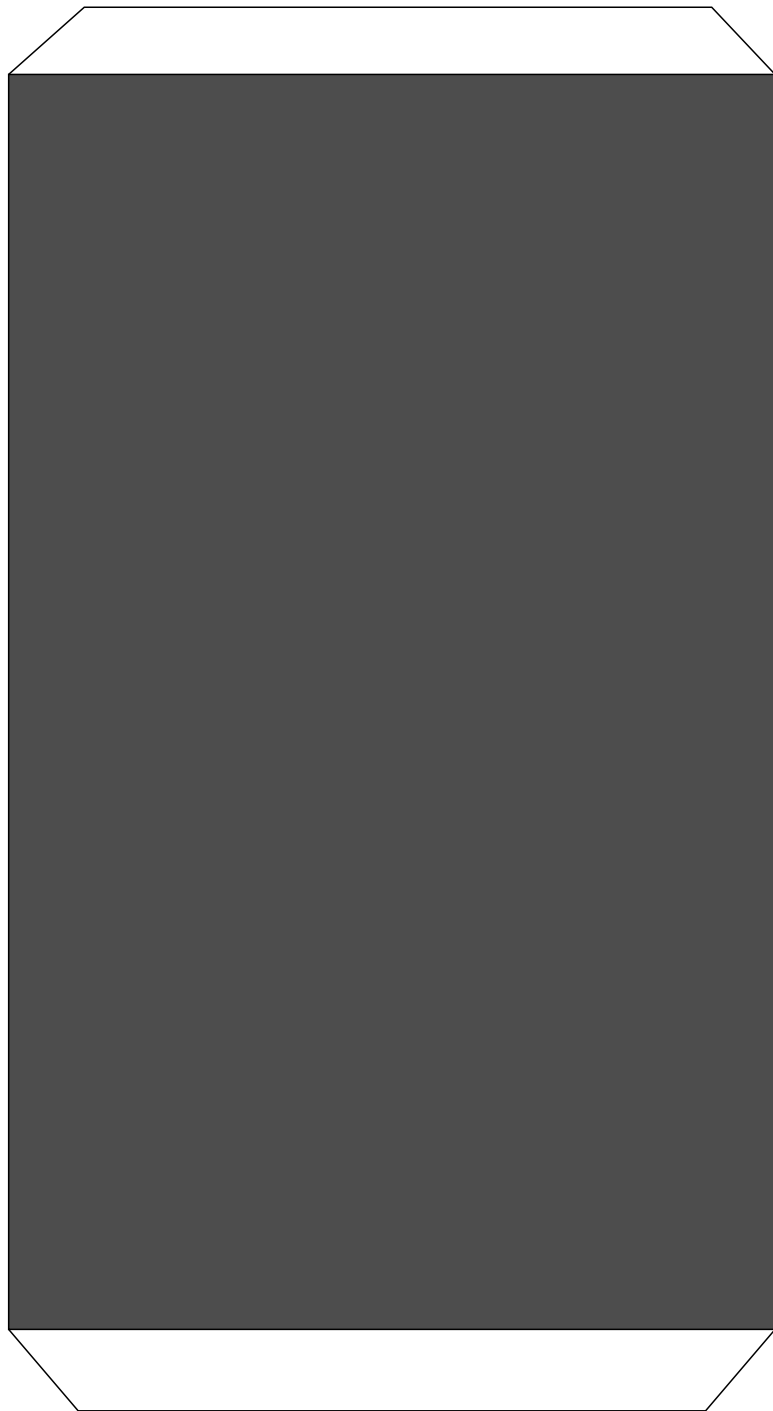
Recommandation : 160 g/m2 minimum

***Inspiré par les modèles de Volker Preikschat, atlas83 vous propose ce bâtiment pour terminer 2014
(page variante)***



Recommandation : 160 g/m² minimum

Inspiré par les modèles de Volker Preikschat, atlas83 vous propose ce bâtiment pour terminer 2014



Recommandation : 160 g/m² minimum