

Ferrari 641 Year 1990 Designed by John Barnard and Steve Nichols. Drivers: A. Prost, N. Mansell.

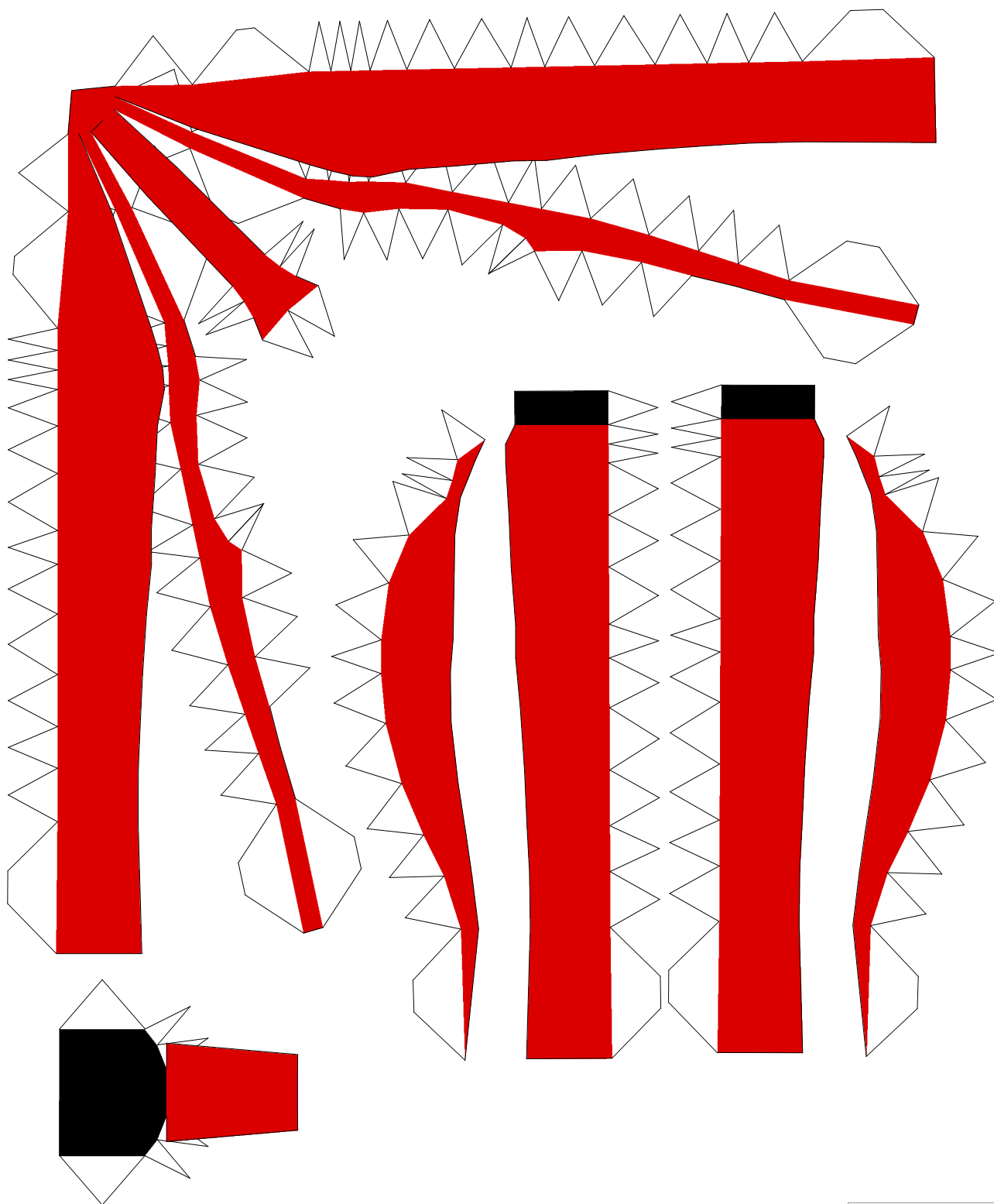
All about this car: http://en.wikipedia.org/wiki/Jordan_191

This is a paper model made by keroliver using Irfanview, Metasequoia and Pepakura.

Total length when printed: 15 cm circa 1/30 Free Model NOT FOR SALE

for: <http://teamaocmodels.tripod.com/> and: <http://www.maquettes-papier.net/forumenpapier/>

Enjoy it! keroliver



Ferrari 641 Year 1990 Designed by John Barnard and Steve Nichols. Drivers: A. Prost, N. Mansell.

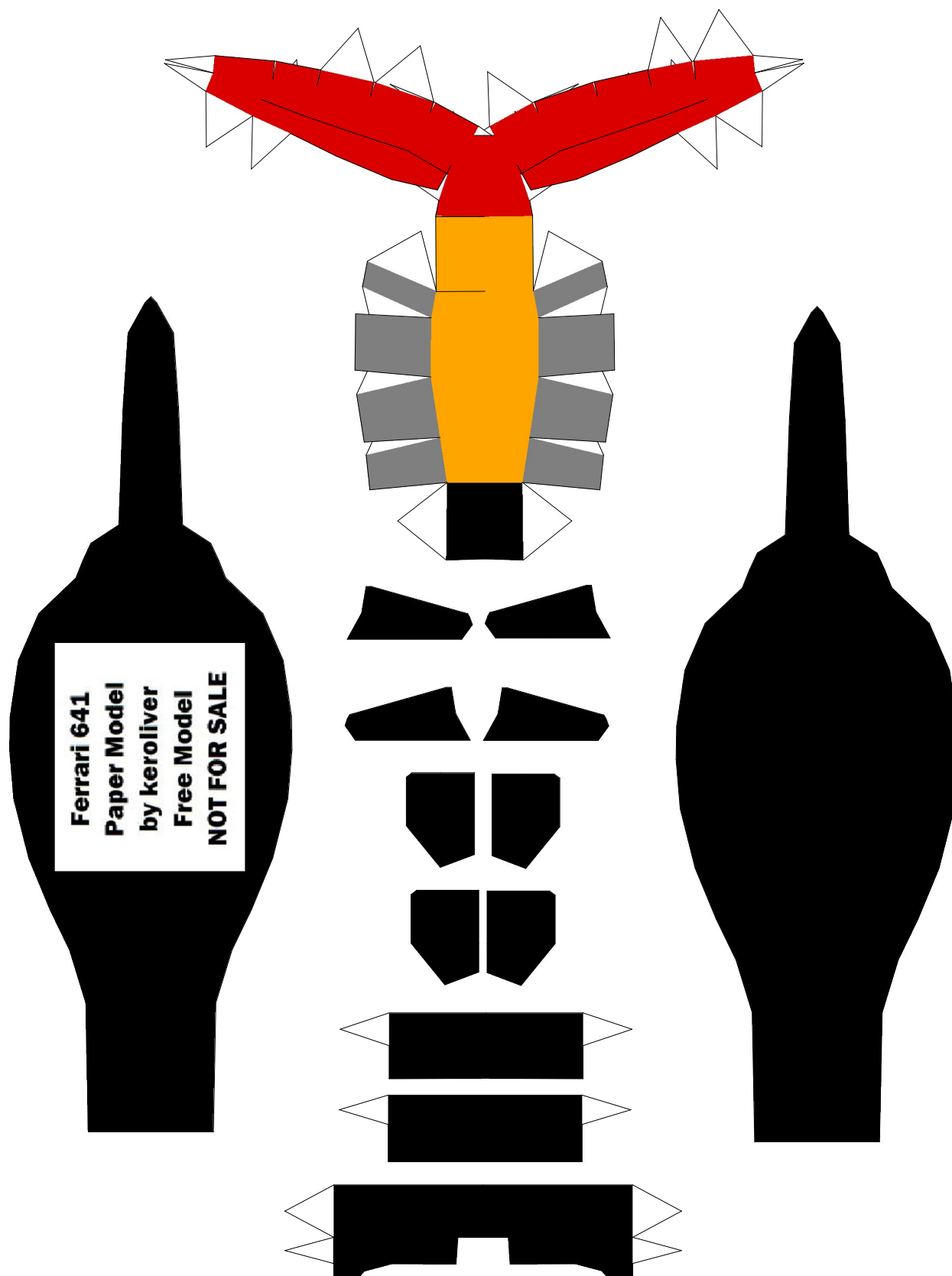
All about this car: http://en.wikipedia.org/wiki/Jordan_191

This is a paper model made by keroliver using Irfanview, Metasequoia and Pepakura.

Total length when printed: 15 cm circa 1/30 Free Model NOT FOR SALE

for: <http://teamaocmodels.tripod.com/> and: <http://www.maquettes-papier.net/forumenpapier/>

Enjoy it! keroliver



Ferrari 641 Year 1990 Designed by John Barnard and Steve Nichols. Drivers: A. Prost, N. Mansell.

All about this car: http://en.wikipedia.org/wiki/Jordan_191

This is a paper model made by keroliver using Irfanview, Metasequoia and Pepakura.

Total length when printed: 15 cm circa 1/30 Free Model NOT FOR SALE

for: <http://teamaocmodels.tripod.com/> and: <http://www.maquettes-papier.net/forumenpapier/>

Enjoy it! keroliver

