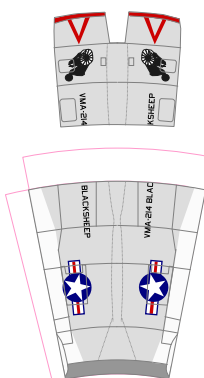
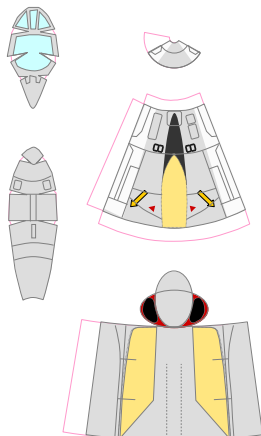
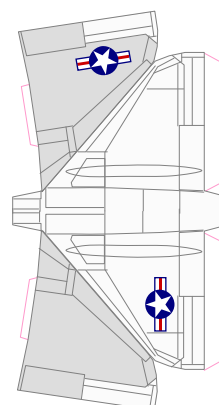
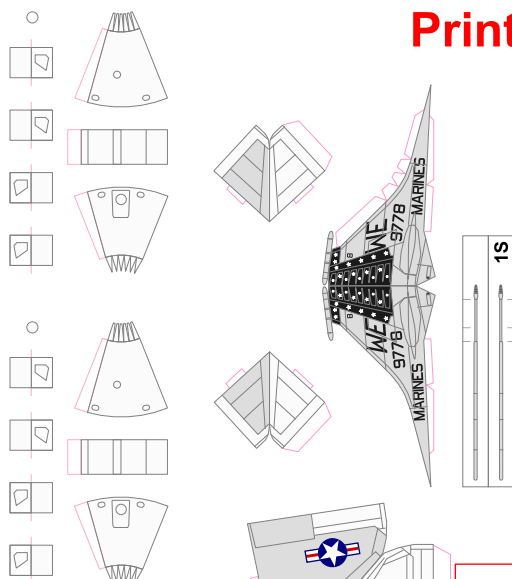


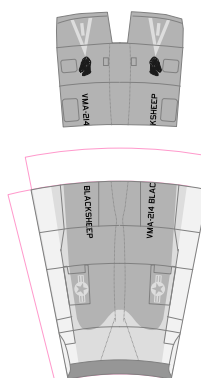
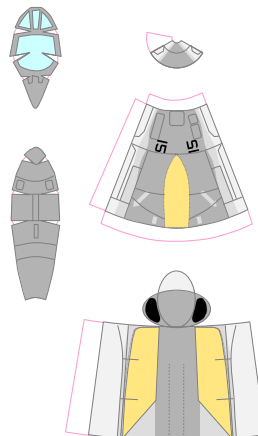
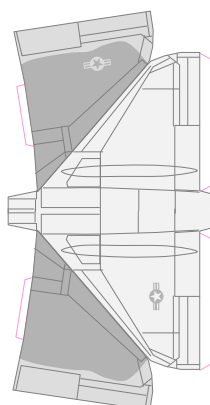
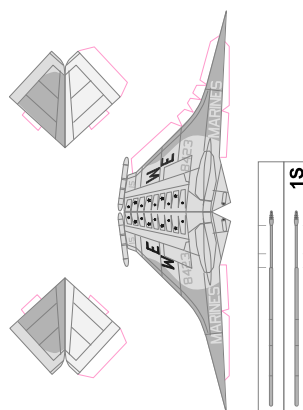
Print at 66.66% for 1:300

McDonnell-Douglas VMA-214 "Blacksheep", MCAS El Toro, 1980
A-4M Skyhawk

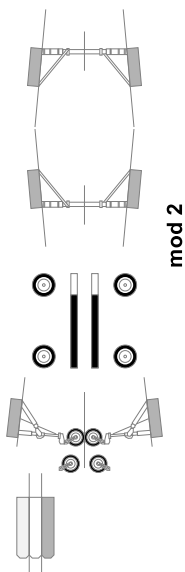
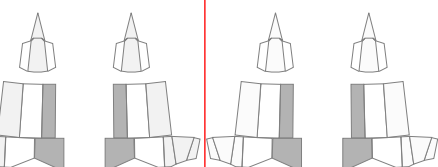
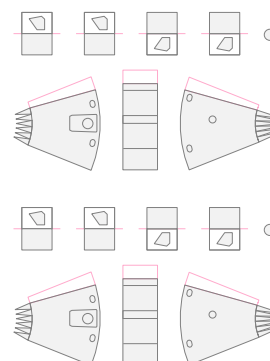


McDonnell-Douglas VMA-214 "Blacksheep", Yokota AB, 1988

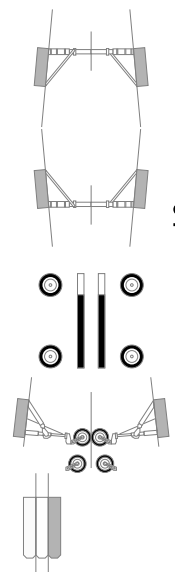
A-4M Skyhawk



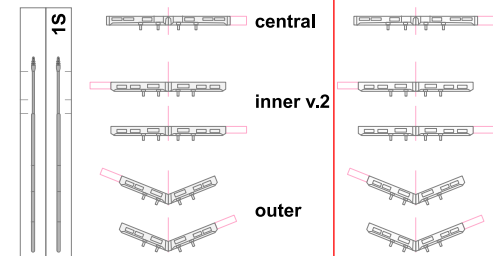
- 300 gal. fuel tank configs :
- 4 fins
 - 2 fins
 - no fins
 - no fins, last segment removed



mod 2

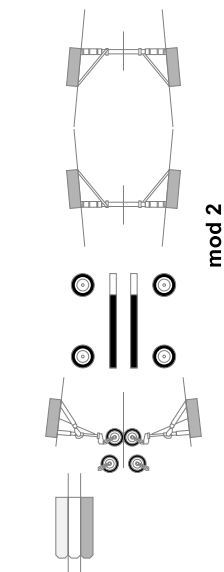
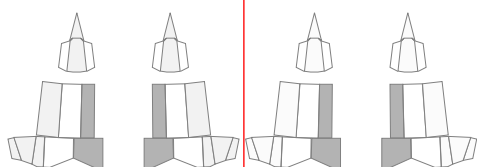
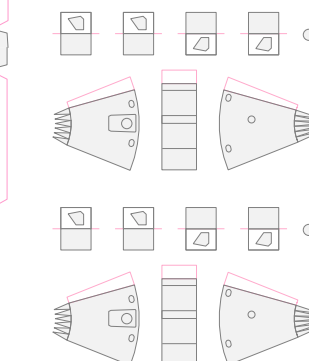


mod 2

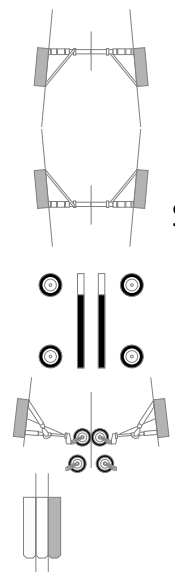


central
inner v.2
outer

- 300 gal. fuel tank configs :
- 4 fins
 - 2 fins
 - no fins
 - no fins, last segment removed



mod 2



mod 2