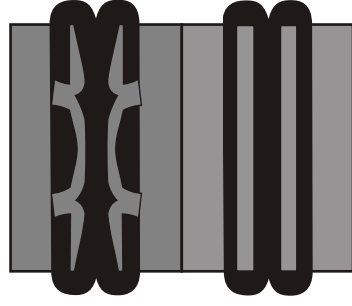
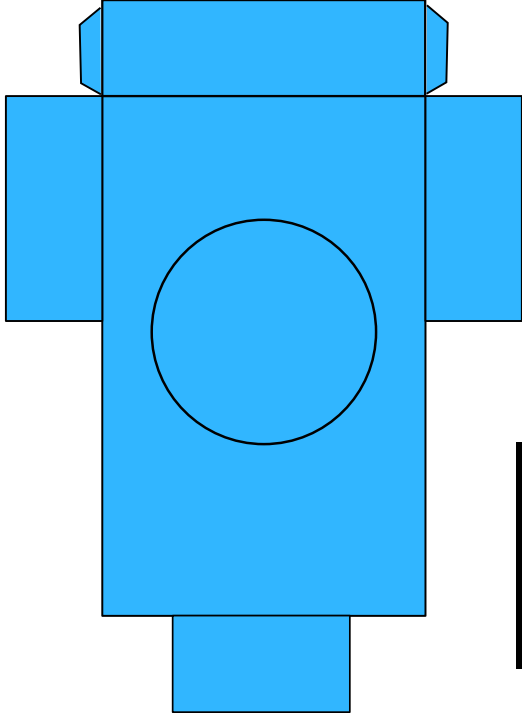
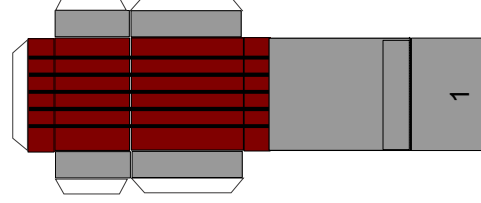


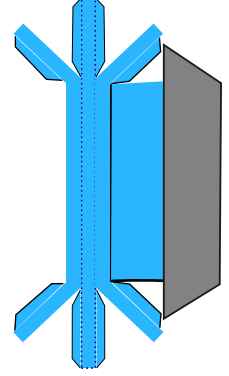
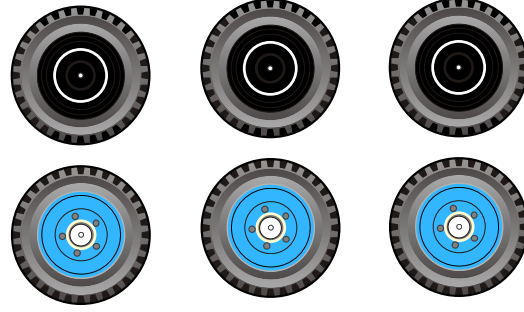
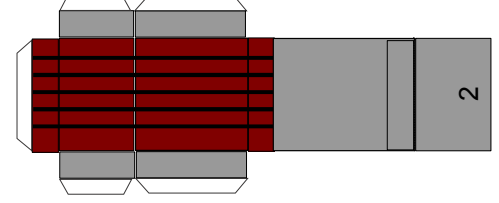
jeanbi (c) Septembre 2017
jeanbi@jeanbi.fr -- <http://jeanbi.jeanbi.fr>



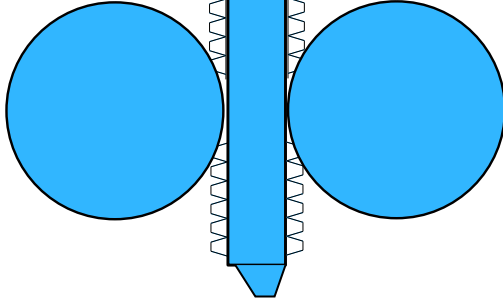
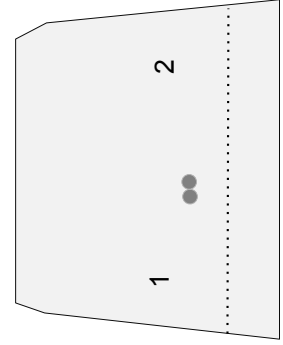
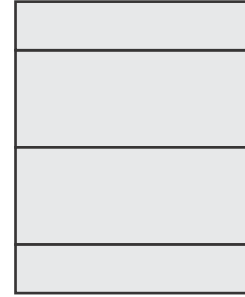
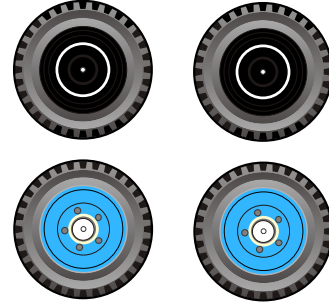
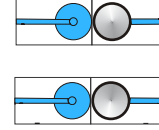
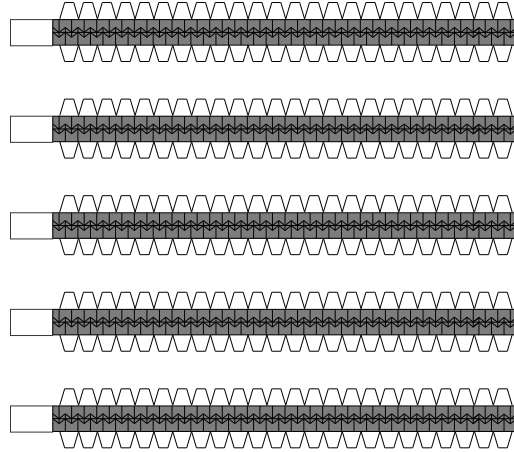
couvre roue de secours

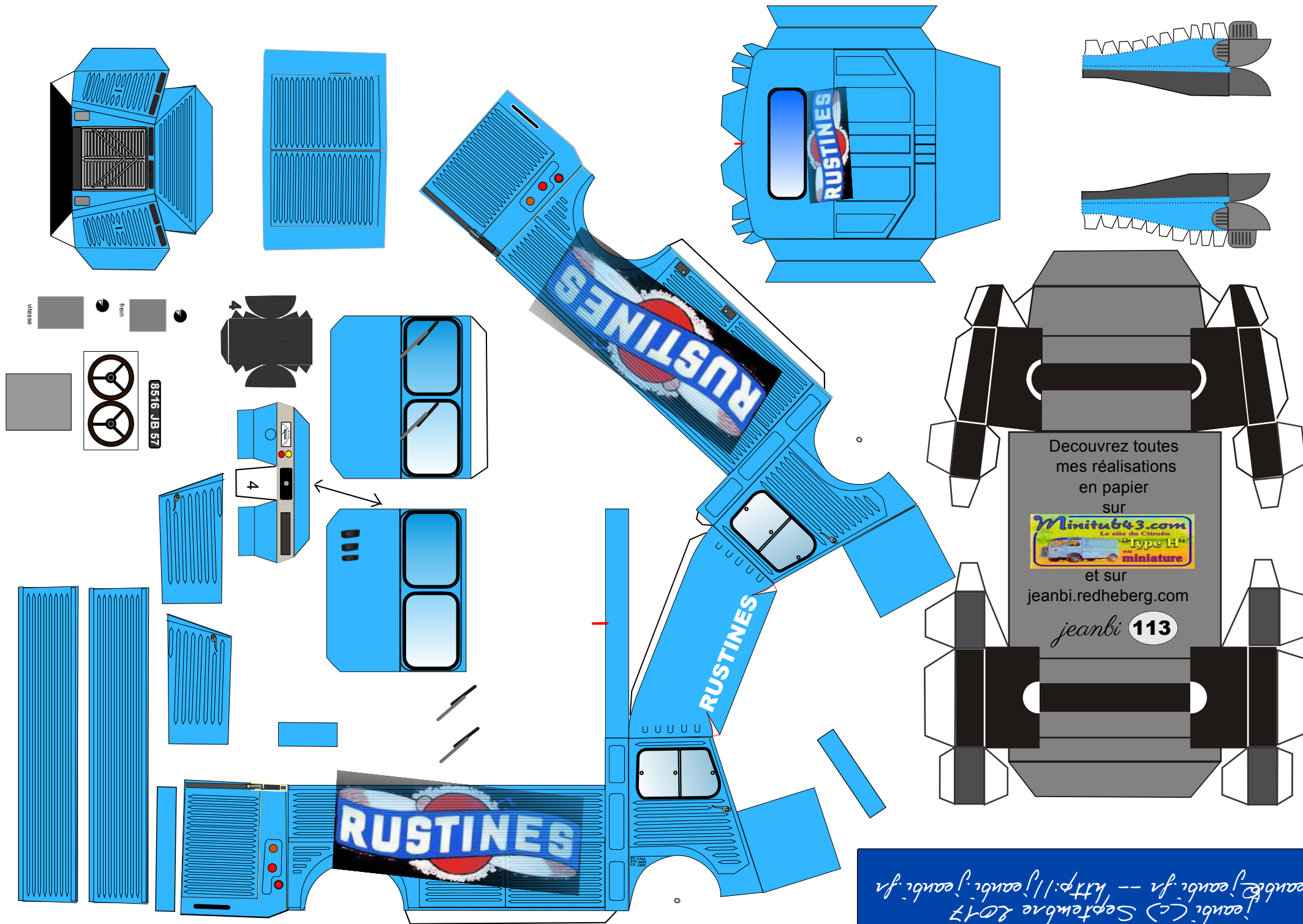


1 et 2 sieges avant



8515 JB 57





jeanbi (c) Septembre 2017
jeanbi@jeanbi.fr -- http://jeanbi.jeanbi.fr

Decouvrez toutes
mes réalisations
en papier
sur
Minitube43.com
Le site du Citroën
"Type H"
en miniature
et sur
jeanbi.redheberg.com
jeanbi 113



Assembly Instructions

1. Carefully cut out the parts.
2. Fold along the dotted lines, making mountain or valley folds as indicated.
3. Attach the glue spots on each part together.
4. Glue the parts together, and you're done!

*Please read the Assembly Instructions carefully before you begin.

Tools

Scissors, Glue (We recommend quick-drying paper glue.)

How to assemble your model neatly

Scoring along the fold lines in advance with a dried up pen or a ruler with slightly sharp corners will result in a neater model.

*Be careful not to press too hard as the paper may tear.

Notation Key



Scissors line



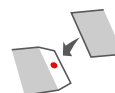
Mountain fold



Cut in line



Valley fold

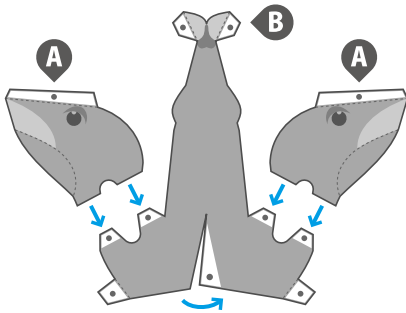


Glue spot

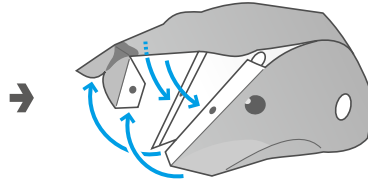
Caution

Keep scissors and glue away from small children.
Be careful not to cut your fingers when using scissors.

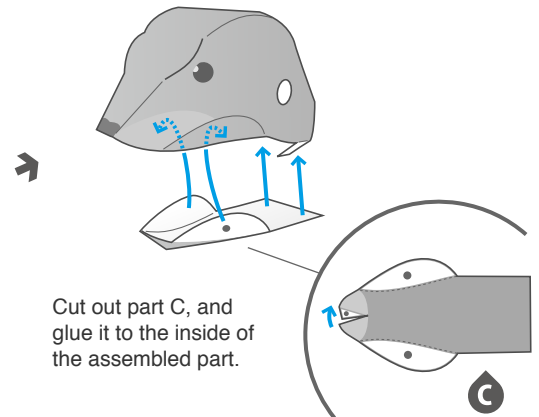
1 Assemble the head



Cut out parts A and B, and attach the glue tabs marked with arrows together.

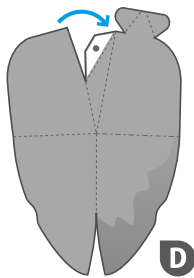


Attach the glue tabs to give the head its shape.

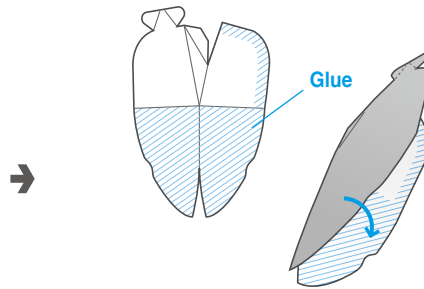


Cut out part C, and glue it to the inside of the assembled part.

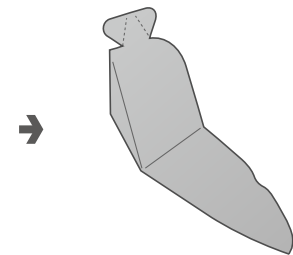
2 Assemble the front flippers



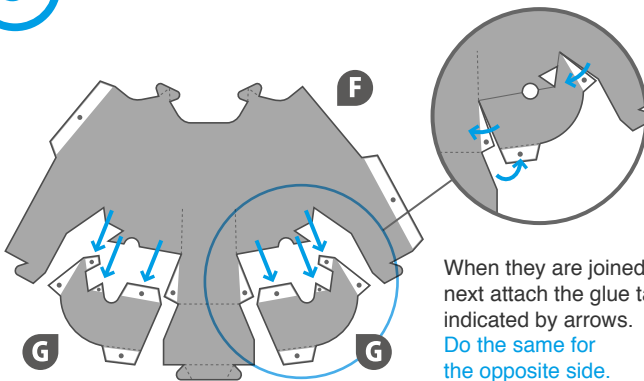
Cut out part D, and attach the glue tab to the adjacent area.



Put glue on the area of the reverse side highlighted here, fold and glue together, and the front flipper (left) is complete. Do the same to assemble the opposite part E (front flipper (right)).

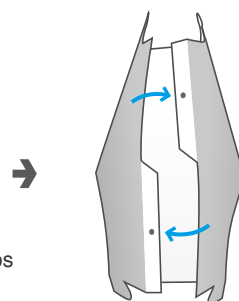


3 Assemble the chest

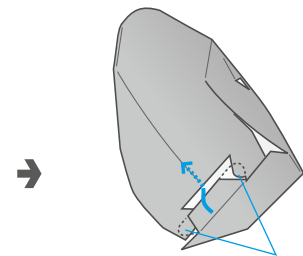


Cut out parts F and G, and join them together by gluing.

When they are joined, next attach the glue tabs indicated by arrows. Do the same for the opposite side.

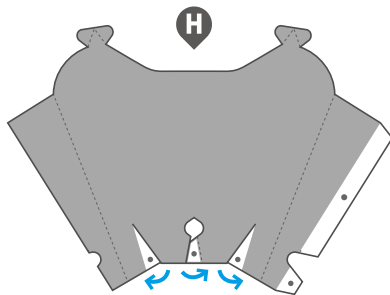


Close the part up and glue together.

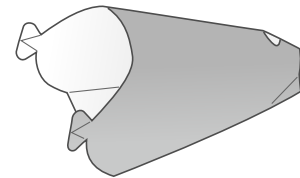
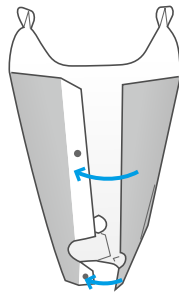


Lastly, tuck the joint inside. After you've tucked it inside, if you open the folded parts back up inside it will prevent it from slipping out.

4 Assemble the belly

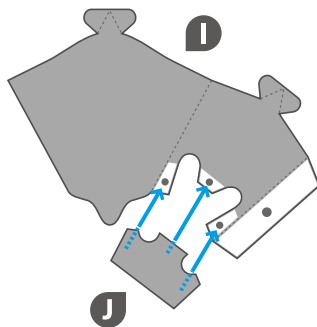


Cut out part H, and attach the glue tabs to their adjacent areas.

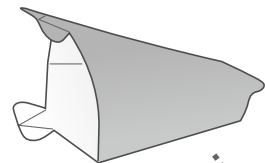
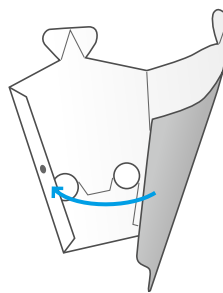


Close the part up into a cylinder shape, and glue together.

5 Assemble the tail

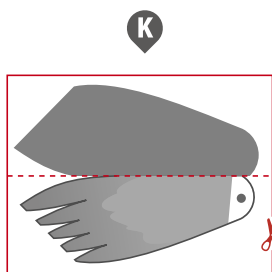


Cut out parts I and J, and join them together by gluing.

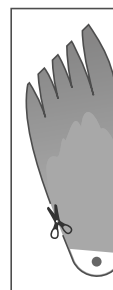
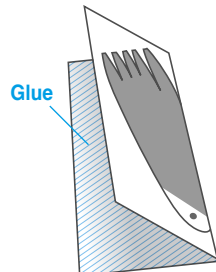


Close the part up into a cylinder shape, and glue together.

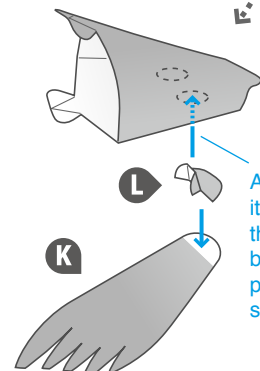
6 Assemble the back flippers



For part K, first cut out the square around the part marked by the red lines. Fold along the center line and glue together at the back.



After gluing, follow the scissors line to cut out the part.



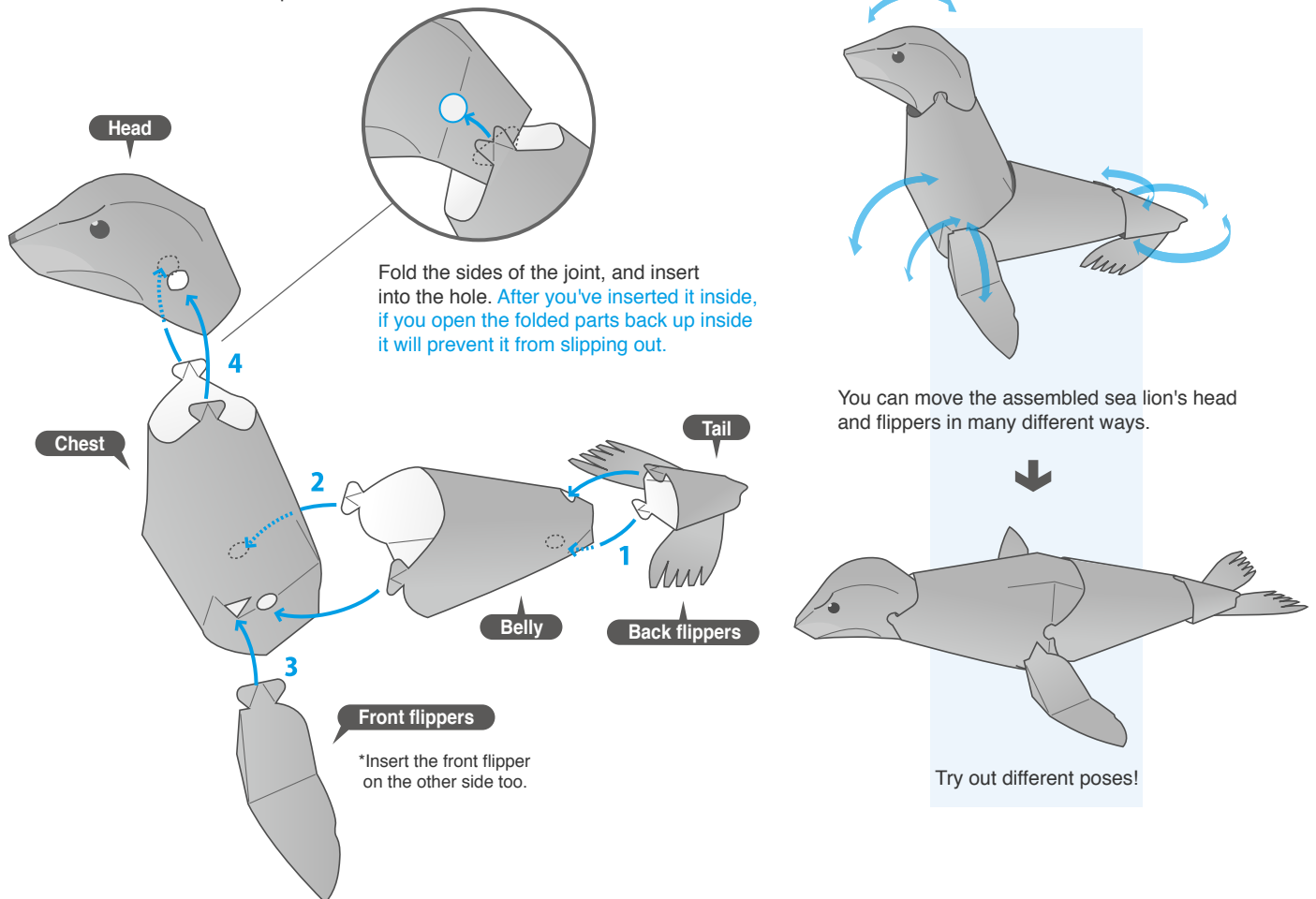
After you've tucked it inside, if you open the folded parts back up inside it will prevent it from slipping out.

After cutting out, attach part L and insert it into the assembled tail.
Assemble and insert part M,N (back flipper (right)) for the other side, in the same way.

7

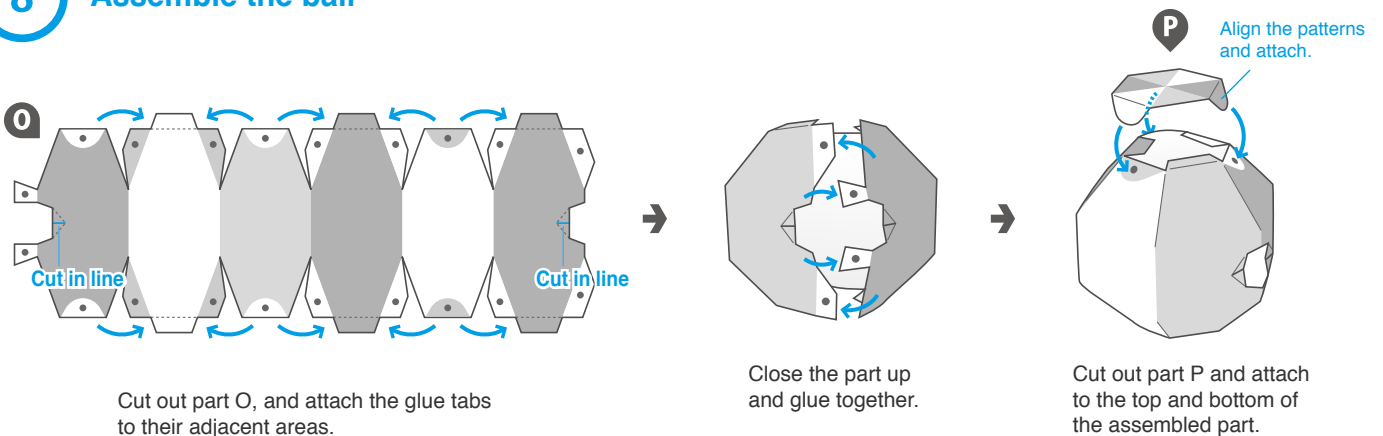
Assemble the sea lion

Attach the joints of the assembled parts in the following order:
tail → belly → chest → front flippers → head.
Your sea lion is complete!

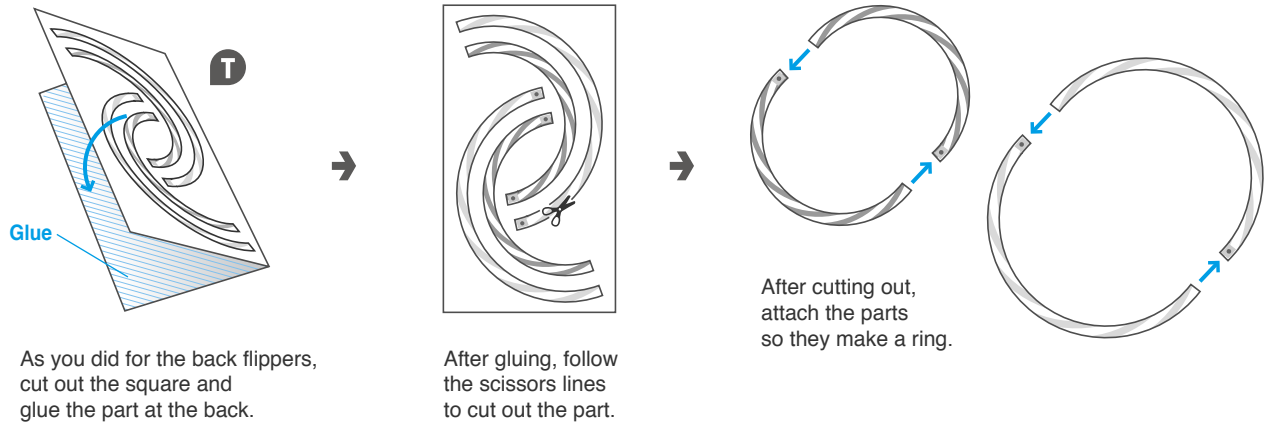


8

Assemble the ball



9 Assemble the hula hoop



10 Assemble the other items

Assemble the other items by attaching the glue tabs as shown by the arrows.
When you are finished, use the different items and have fun with your sea lion!

