

# **COLLECTION PATRIMOINE ROYAL**

## **PARTIE 1**

### **LE CHATEAU DE VERSAILLES**

#### **B) LE CHATEAU PRIMITIF AGRANDI SOUS LOUIS 13**

**ECHELLE : 1-400**

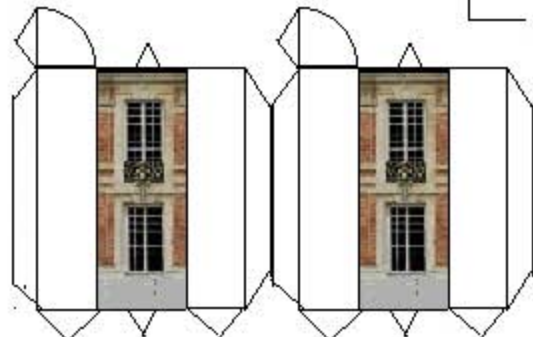
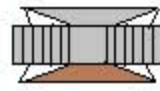
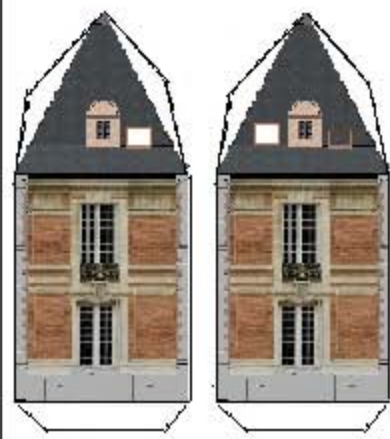
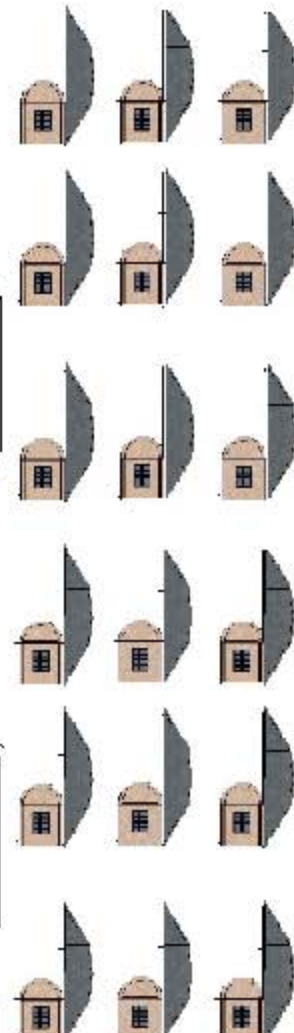
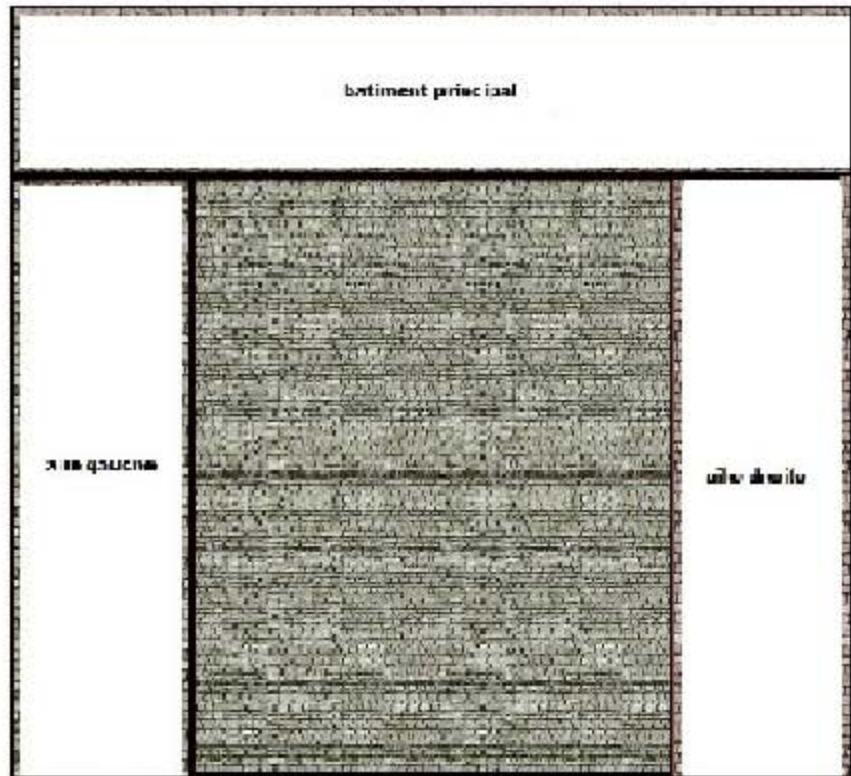
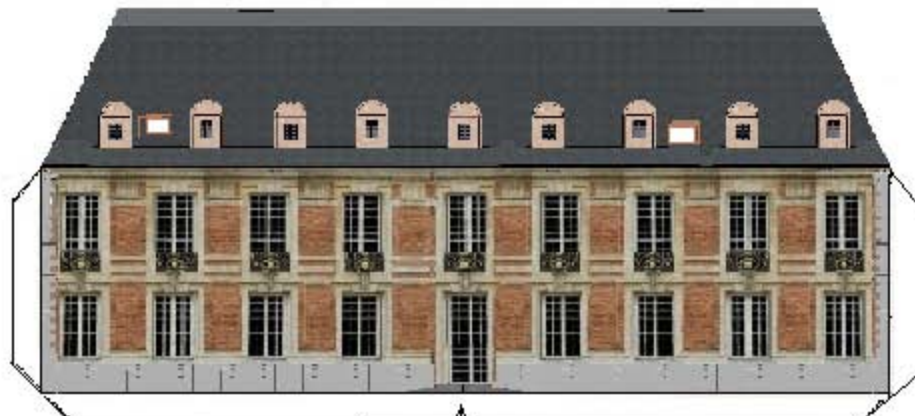
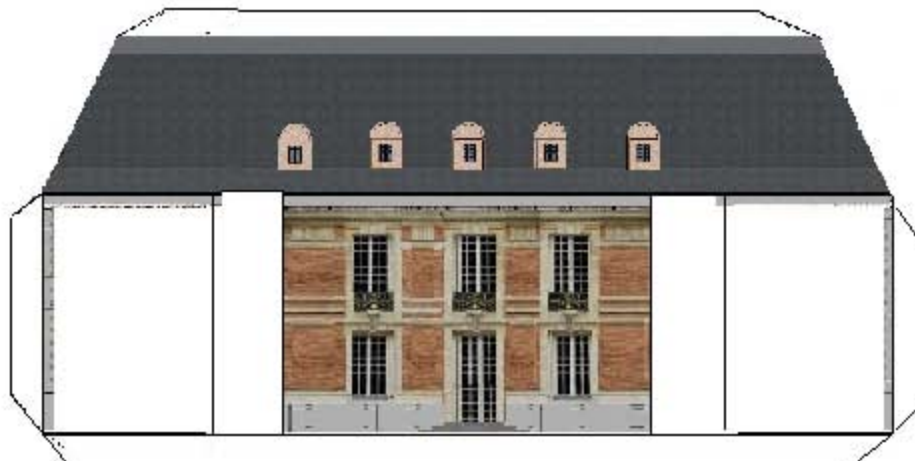


conception et réalisation : DERRICK 83  
en hommage à ROYALPRESTO (Christophe QUENTIN)

**USAGE COMMERCIAL INTERDIT**

le chateau primitif agrandi sous Louis 13  
le batiment principal

ech : 1-400



conception et réalisation : DERRICK 83  
en hommage à ROYALPRESTO (Christophe QUENTIN)  
**USAGE COMMERCIAL INTERDIT**

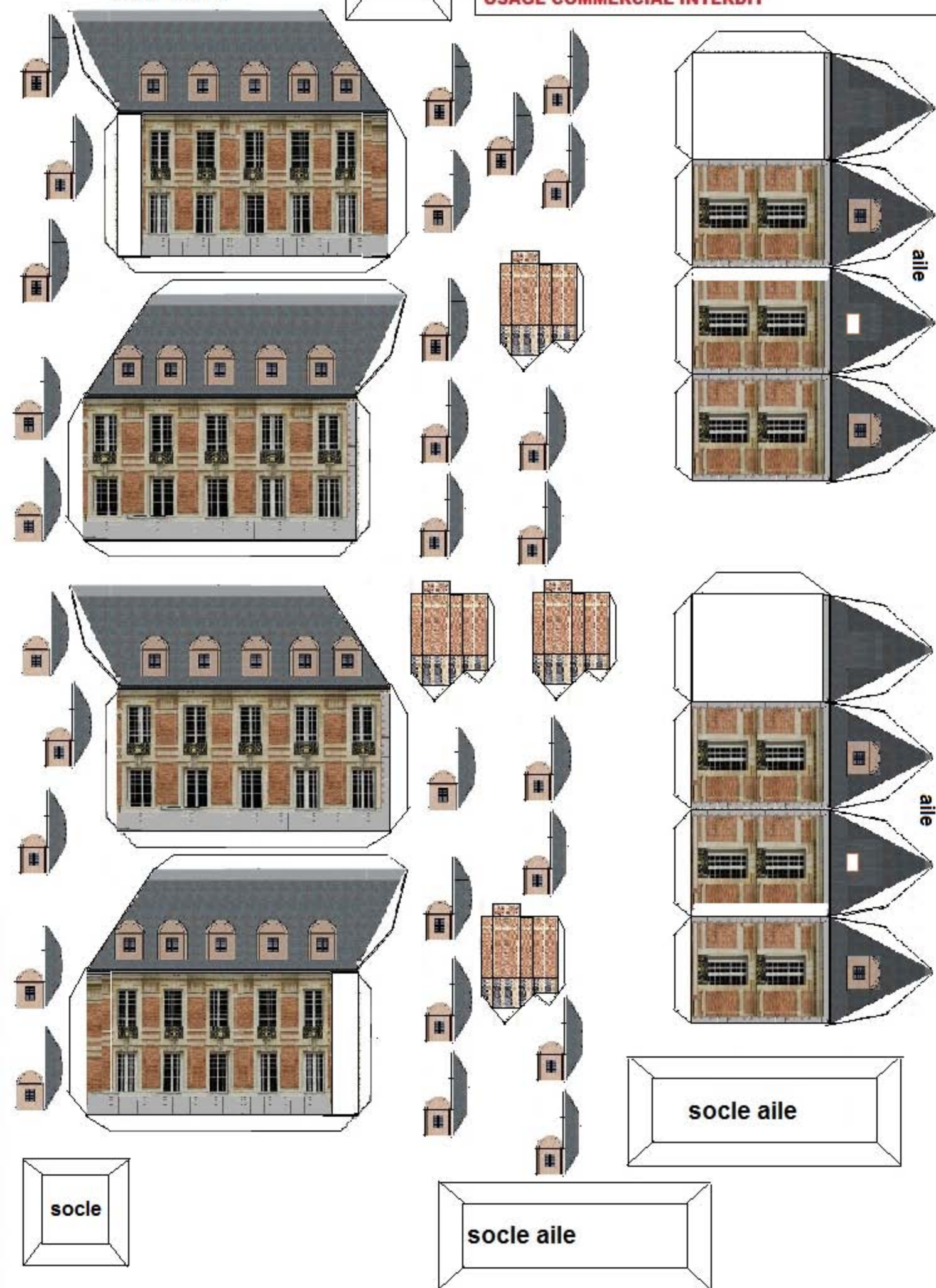


**le chateau primitif agrandi  
sous Louis 13 les ailes  
ech 1-400**

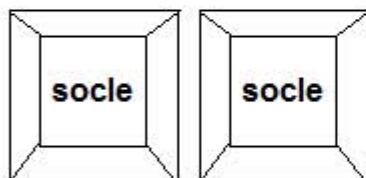
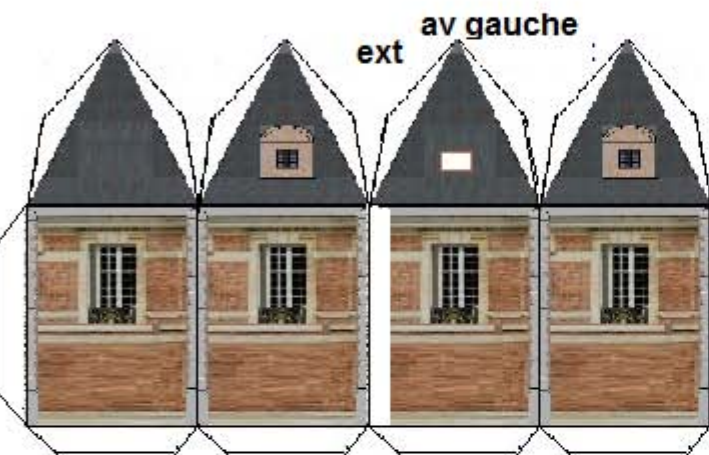
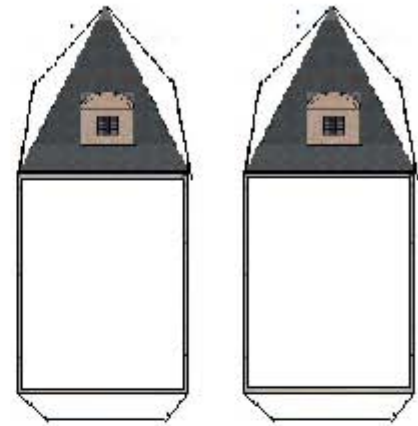
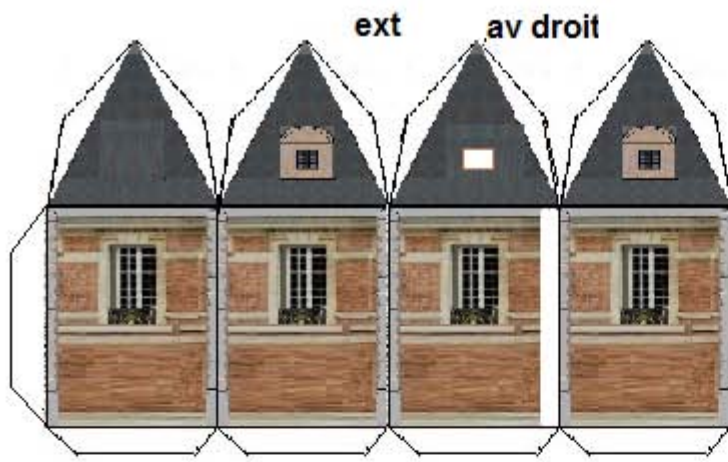
socle

conception et réalisation : DERRICK 83  
en hommage à ROYALPRESTO (Christophe QUENTIN)

**USAGE COMMERCIAL INTERDIT**



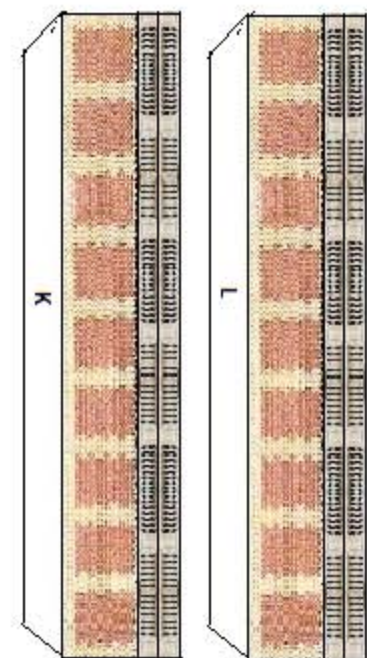
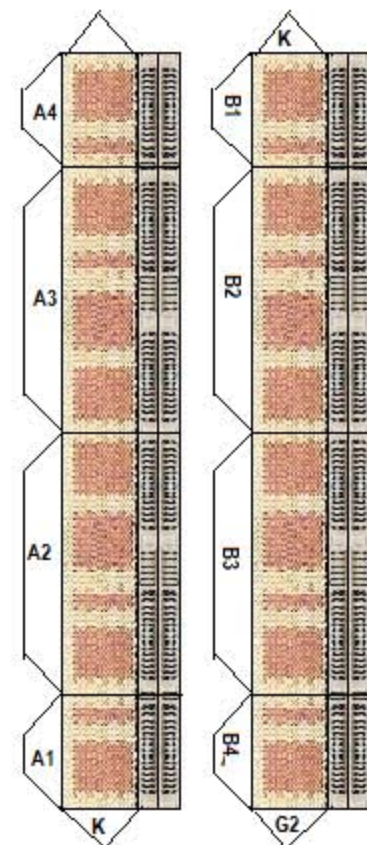
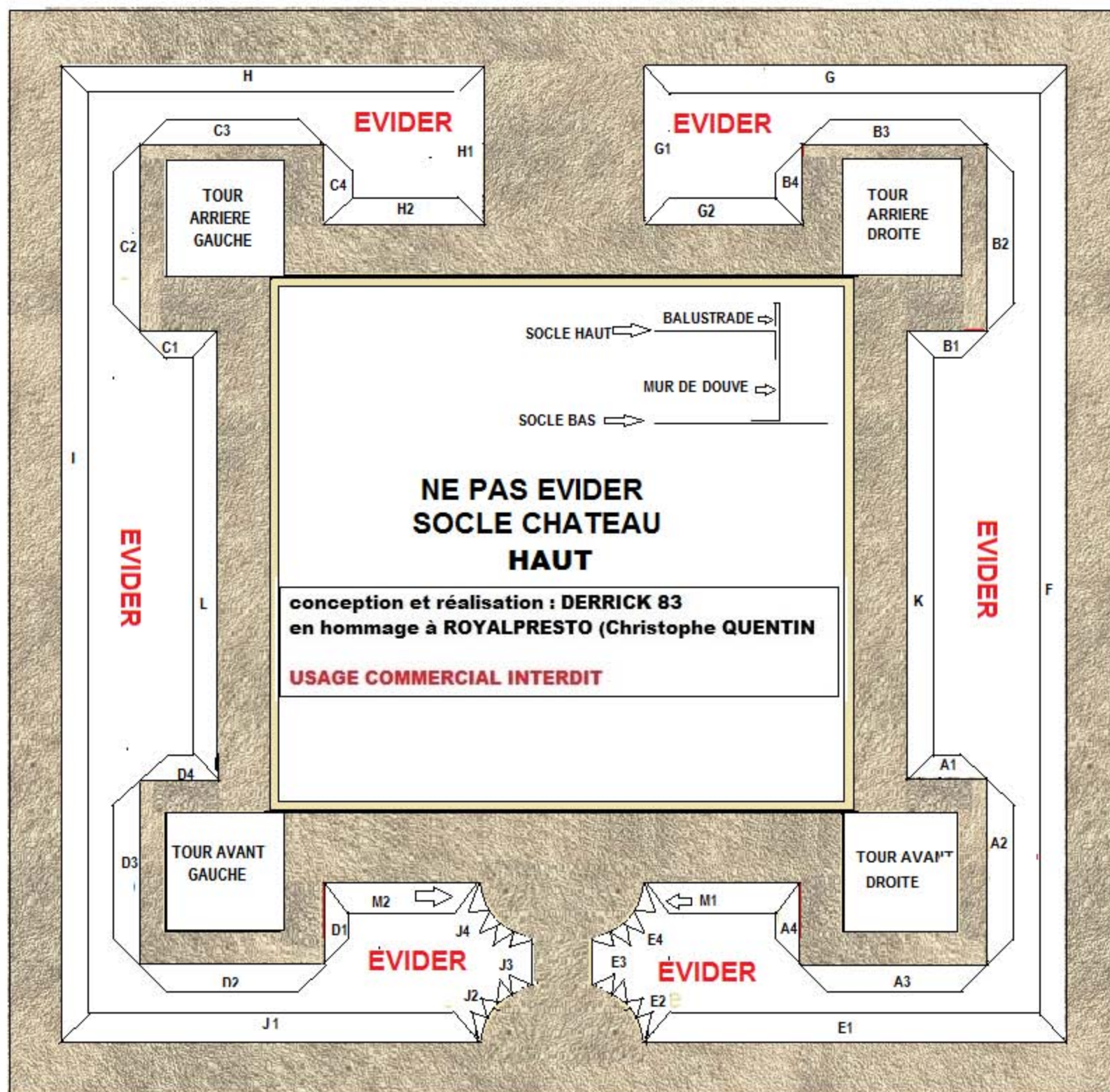
**le chateau primitif agrandi**  
**sous Louis 13 les ailes**  
**ech 1-400**





le chateau  
primitif  
agrandi  
sous  
Louis 13

1/400  
socle 1/3

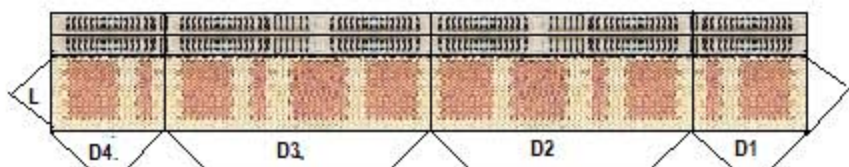
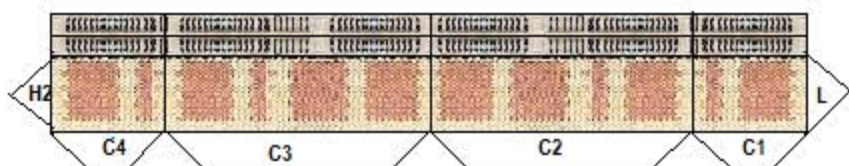
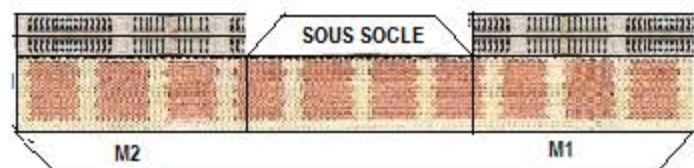




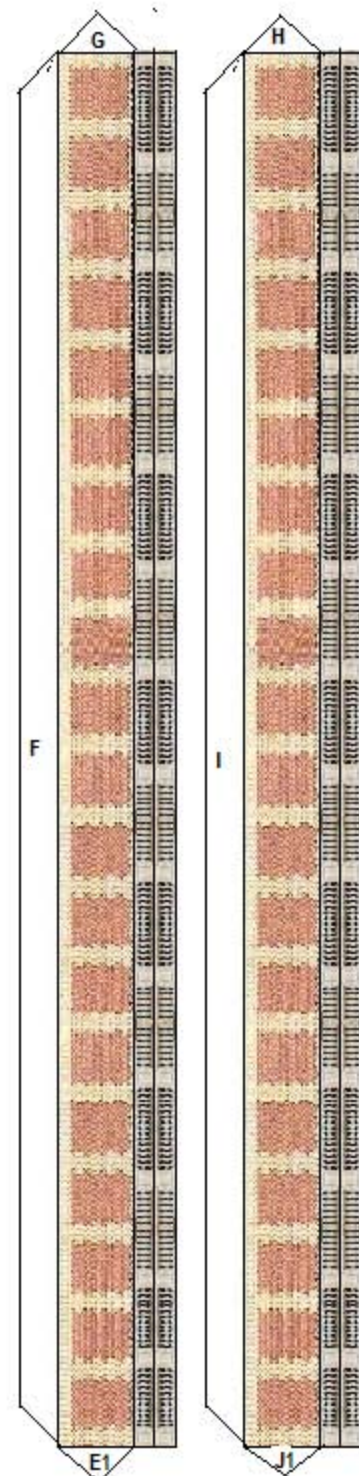
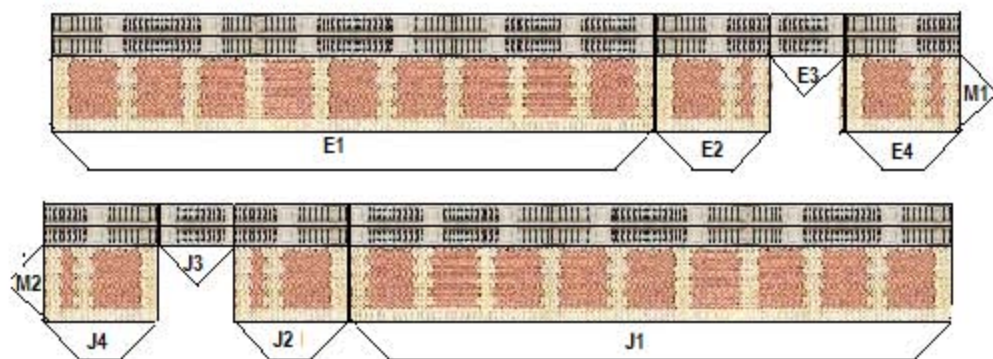
# le chateau primitif agrandi sous Louis 13

conception et réalisation : DERRICK 83  
en hommage à ROYALPRESTO (Christophe QUENTIN)

USAGE COMMERCIAL INTERDIT



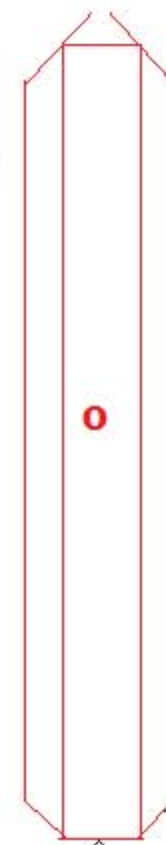
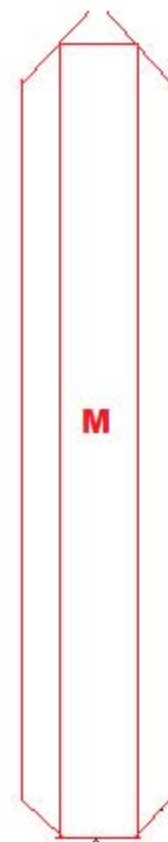
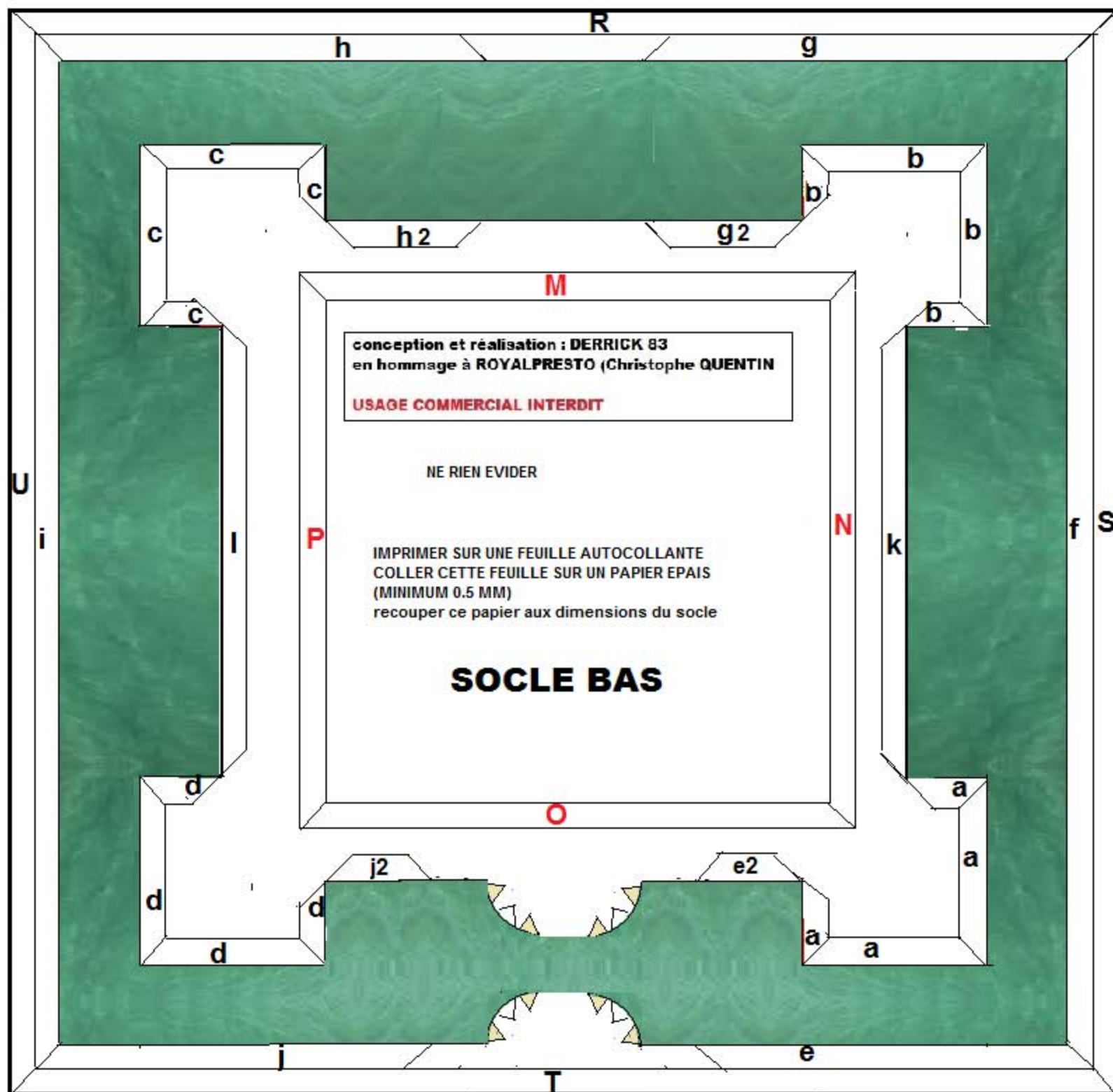
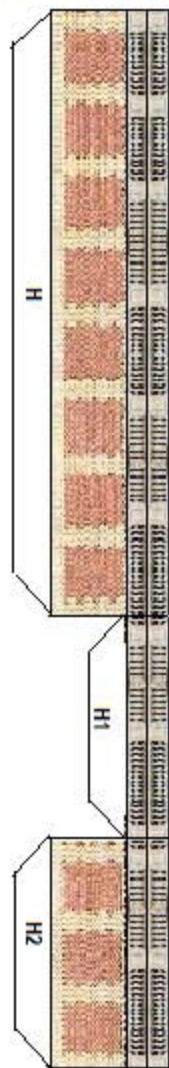
# 1/400 le socle 2 sur 3



le chateau  
primitif  
sous  
Louis 13

le socle  
3/3

ech 1-400





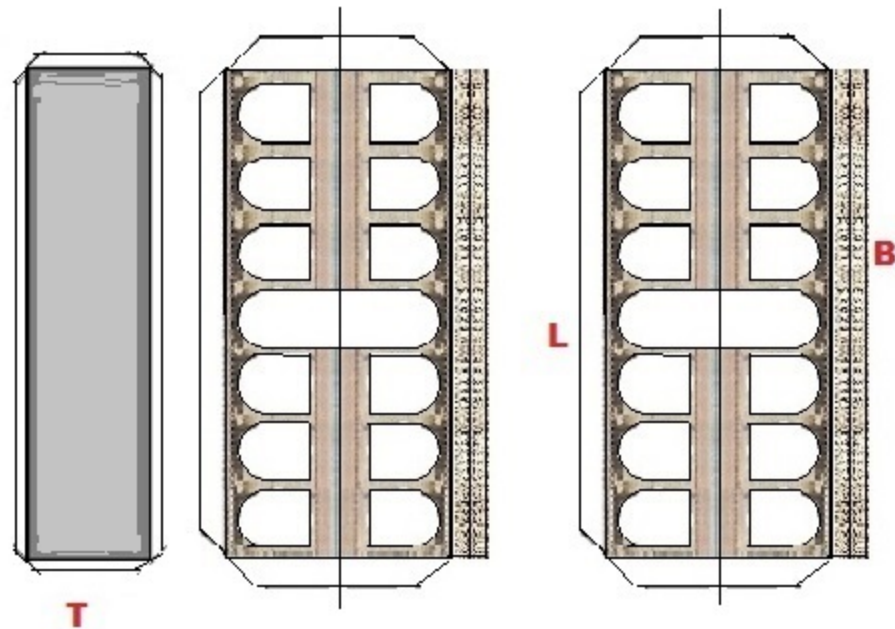
le chateau primitif agrandi sous Louis 13

ech : 1-400

le porche vouté

CONCEPTION ET REALISATION DERRICK83

USAGE COMMERCIAL INTERDIT



la ballustrade B se plie sur elle-même ;  
la languette L se plie vers l'interieur et  
supporte le toit T

