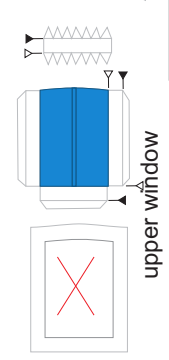
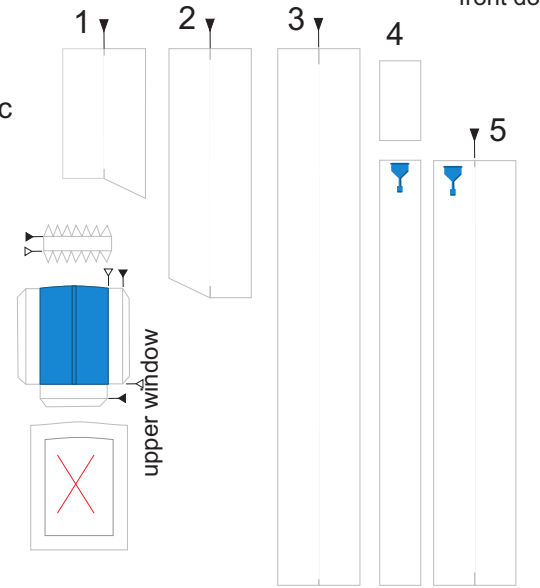
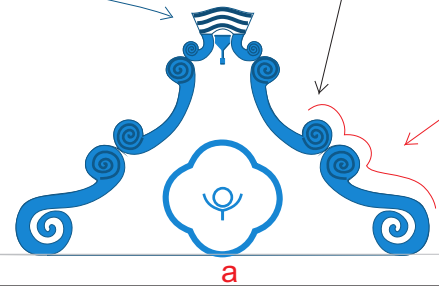
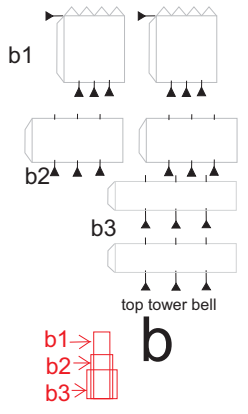
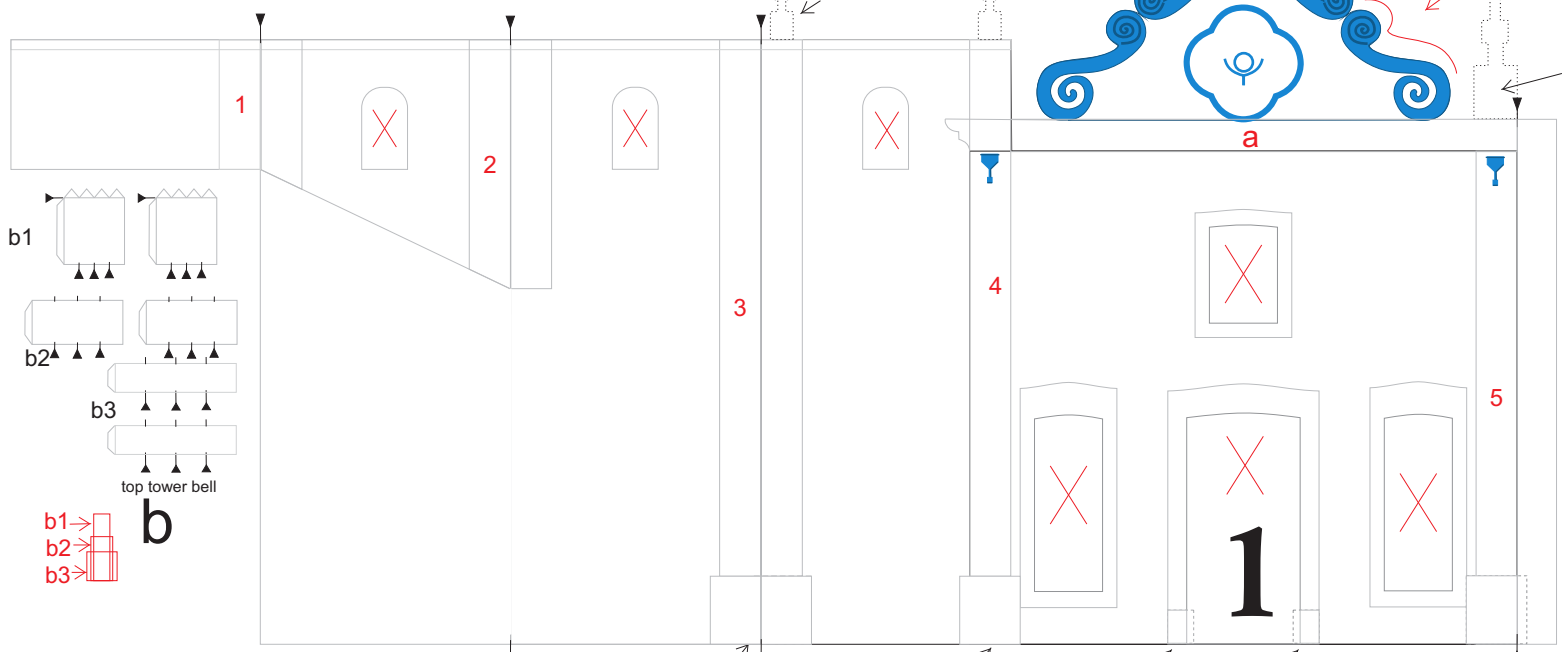
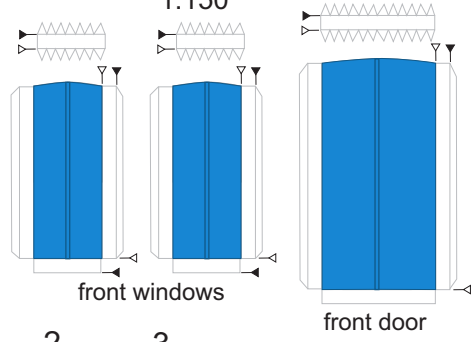
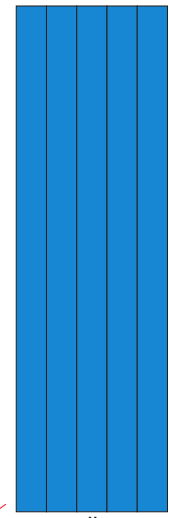
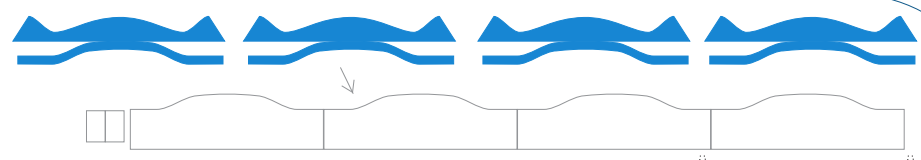
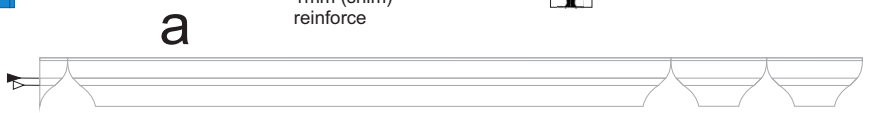
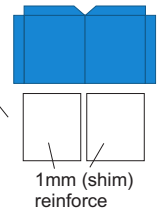
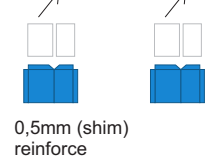
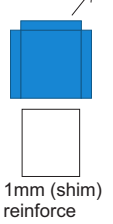
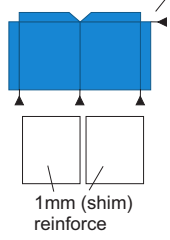
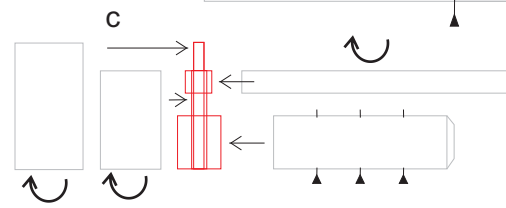


ARQUIPAPEL
Malquevicz/RonaldoM

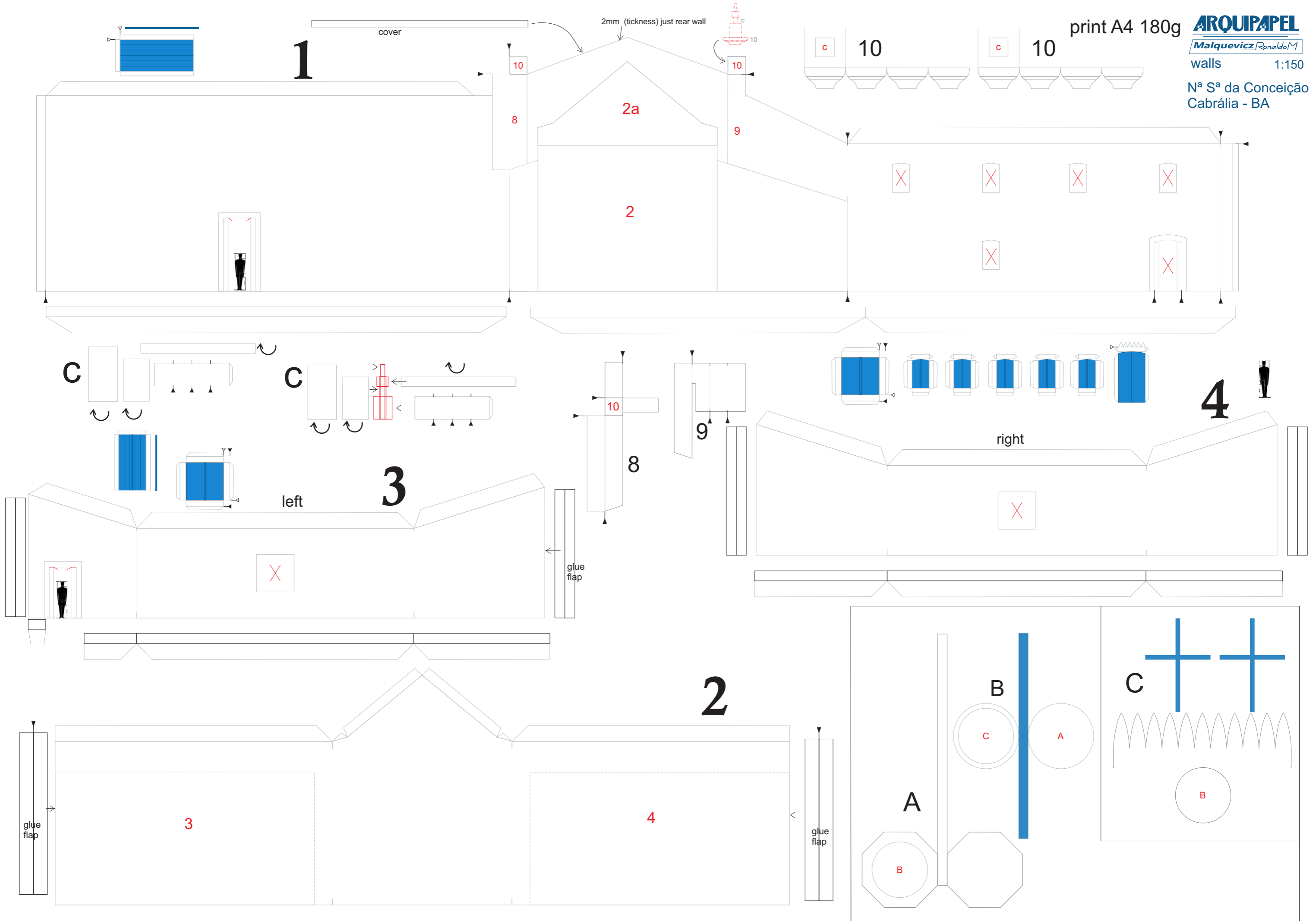
N^a S^a da Conceição
 Cabrália - BA
 1:150



print A4 180g



print A4 180g

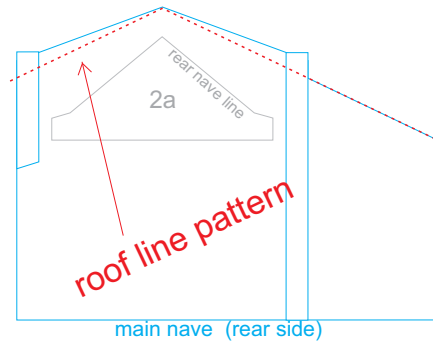
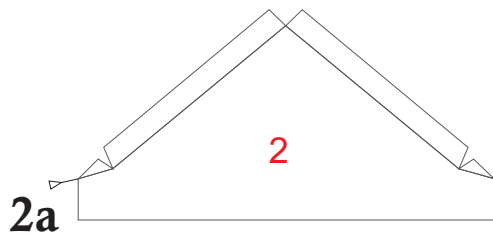
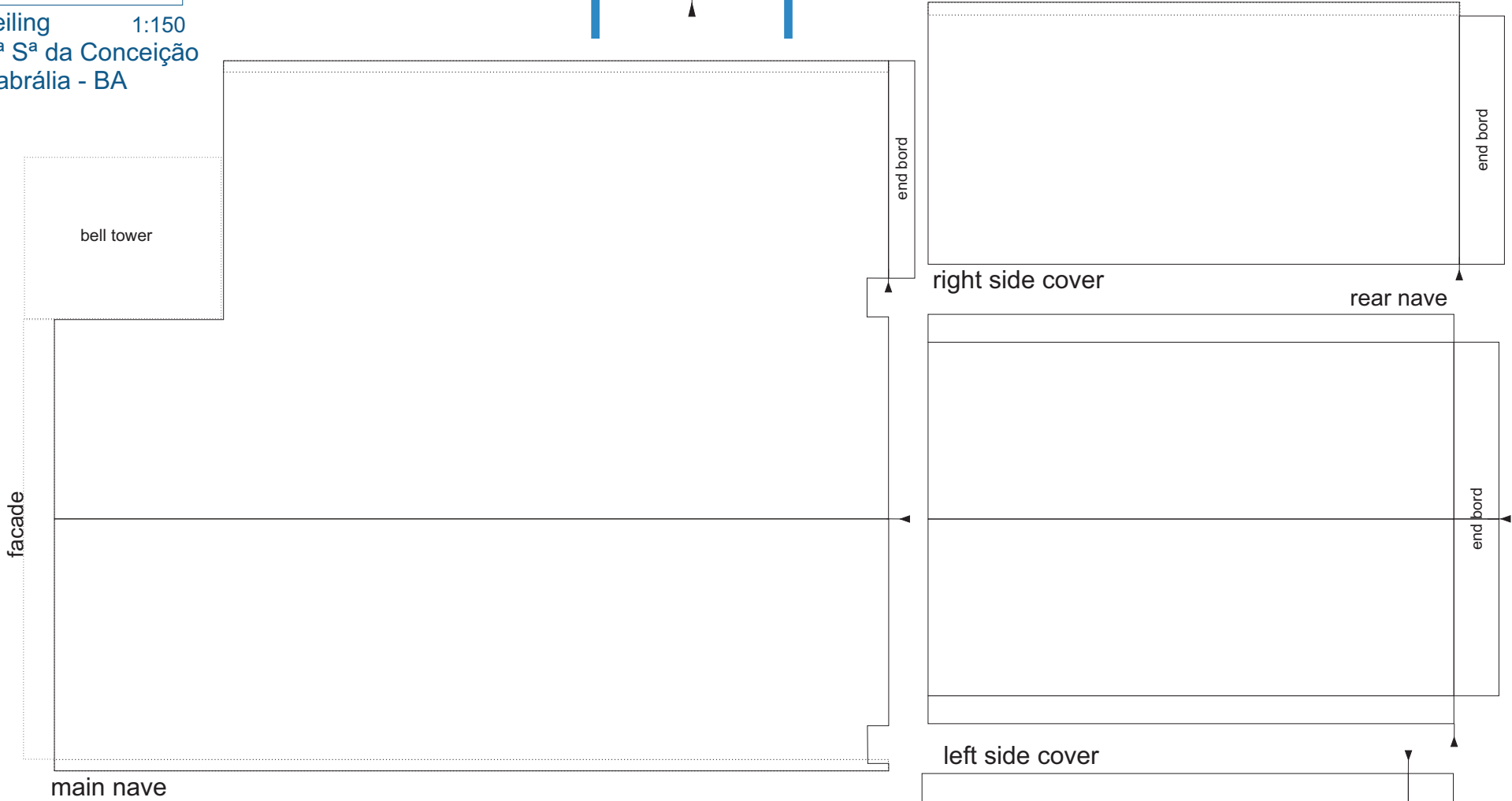
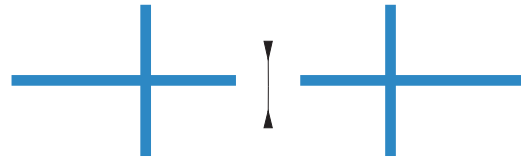


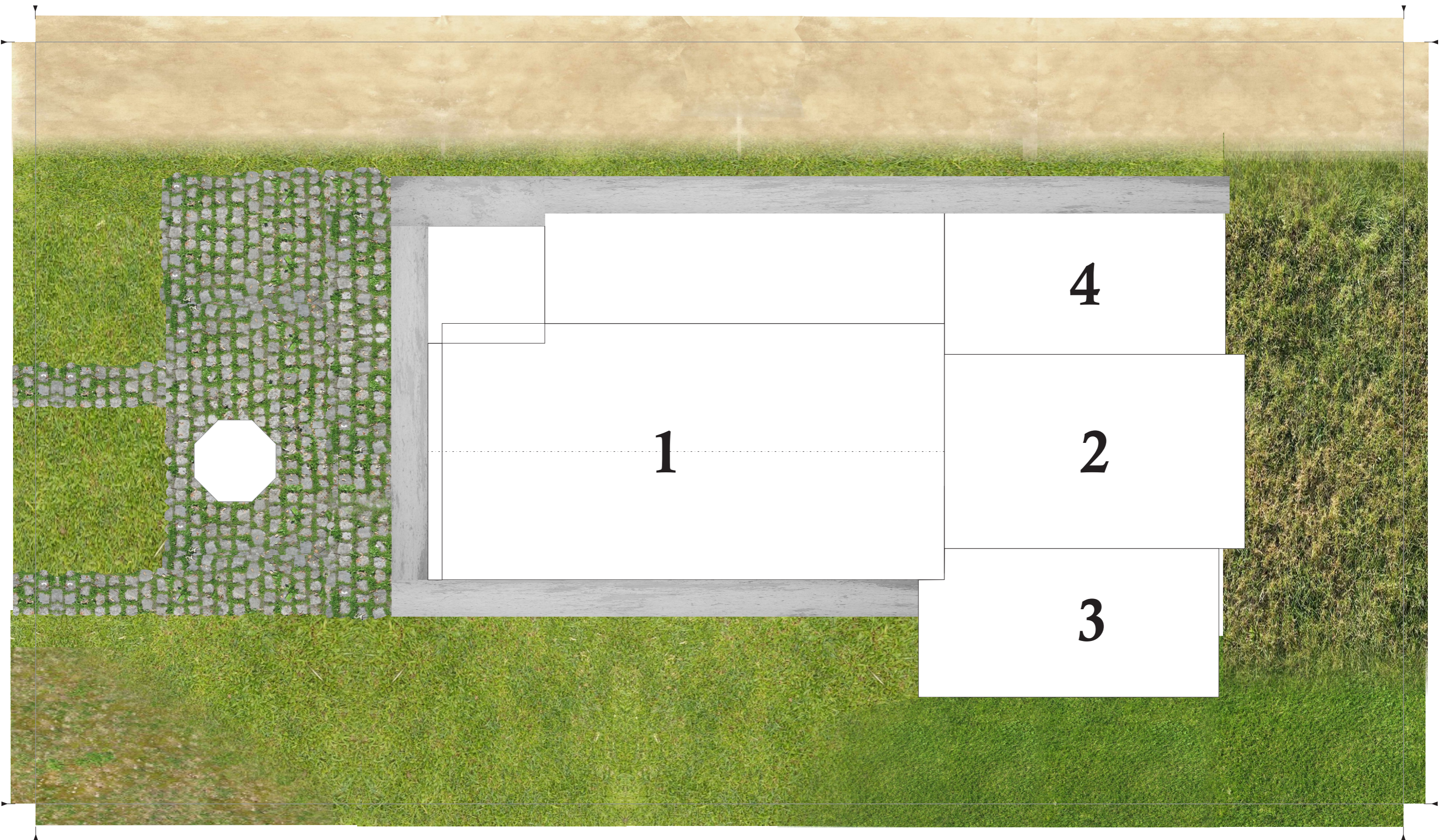
ARQUIPAPEL

Malquevicz Ronaldo M

ceiling 1:150
N^a S^a da Conceição
Cabrália - BA

print A4 180g





1

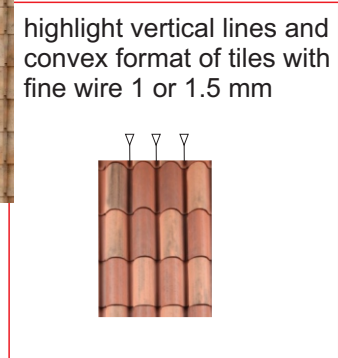
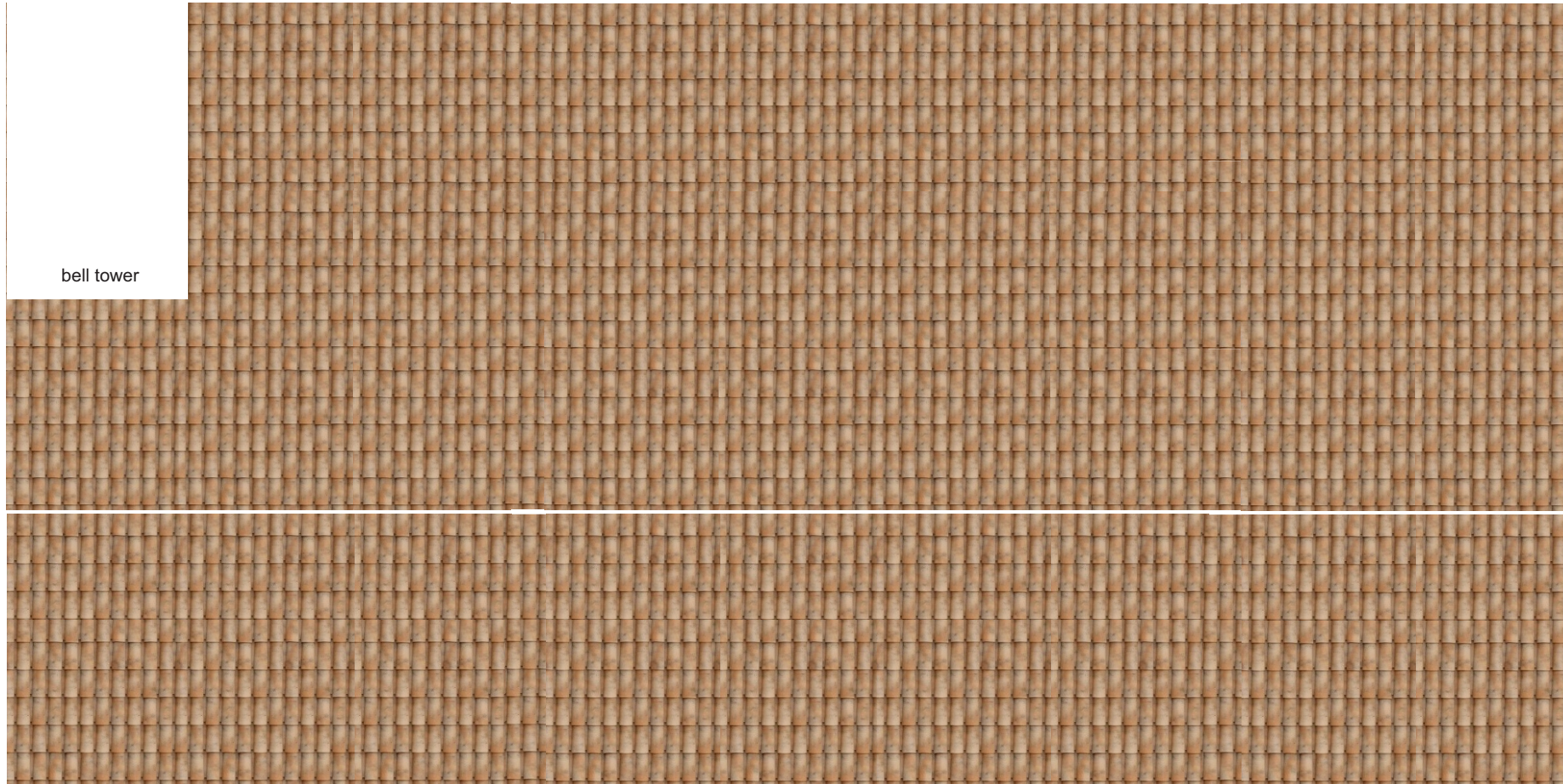
4

2

3

roof 1:150
N^a S^a da Conceição
Cabrália - BA
print A4 150g

bell tower



up corner lines

end bord tile lines



The length of the roofs is increased to allow for the curvature of the tile lines. If you want to make a flat roof, just cut the appropriate size in length.



print A4 150g

ARQUIPAPEL

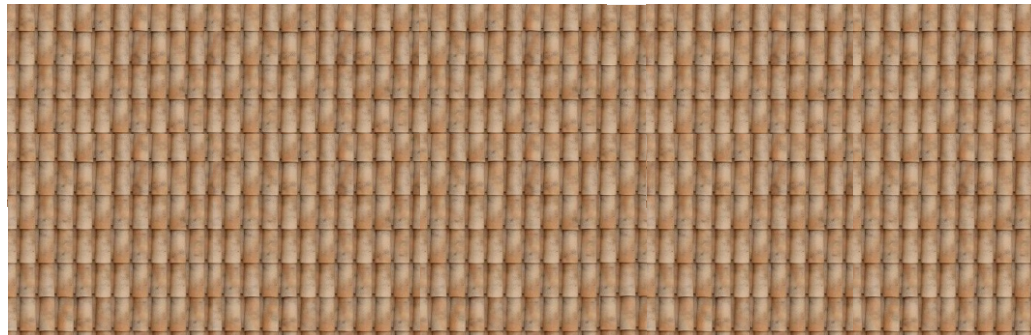
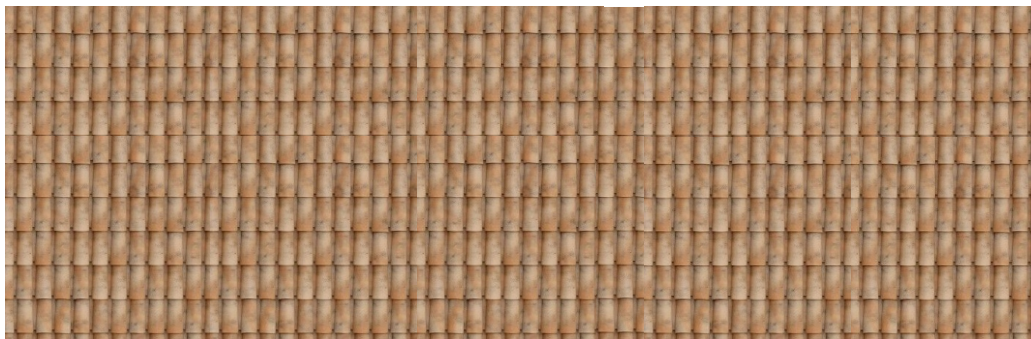
Malquevicz/RonaldoM

roof 1:150
N^a S^a da Conceição
Cabrália - BA



The length of the roofs is increased to allow for the curvature of the tile lines. If you want to make a flat roof, just cut the appropriate size in length.

left / right side building 3 and 4



rear nave building 2

